

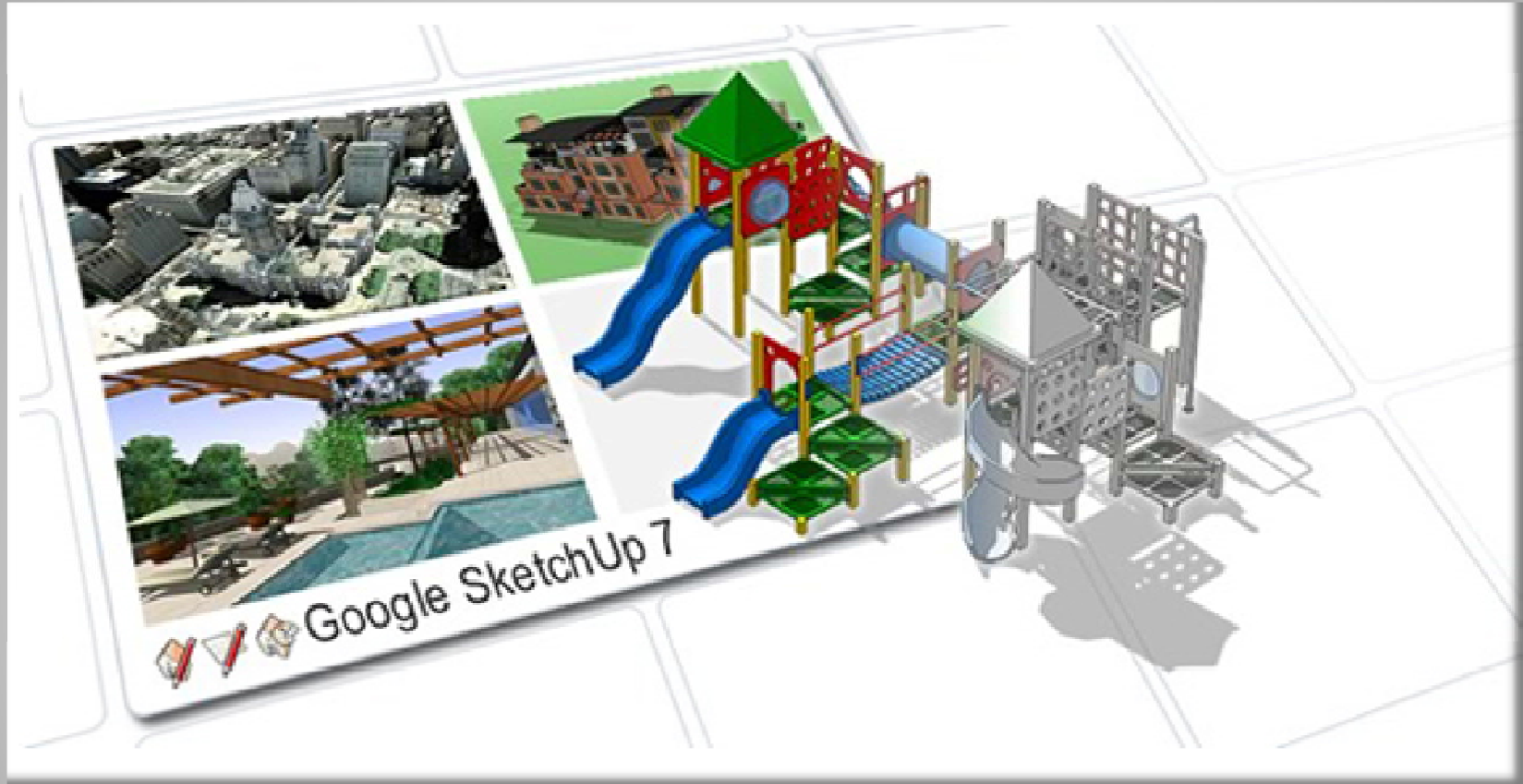


Google™ SketchUp Across the Disciplines

**Grace Blasingame
Sam Rayburn High School
Technology Liaison**



What is Google™ SketchUp?



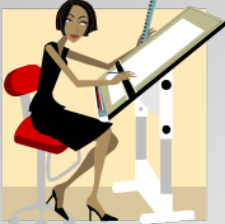
Free 3D software



Free 3D for Everyone

SketchUp is used by:

❖ architects



❖ Filmmakers



❖ civil engineers



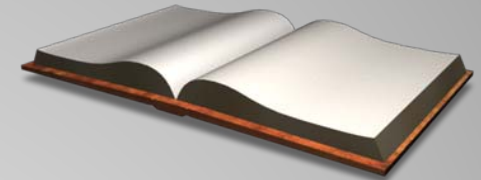
❖ game developers

SketchUp can be used in all disciplines



Math

Science



English



Social studies

Fine Arts: art, drama, music



Construction Systems (wood/metal shop)

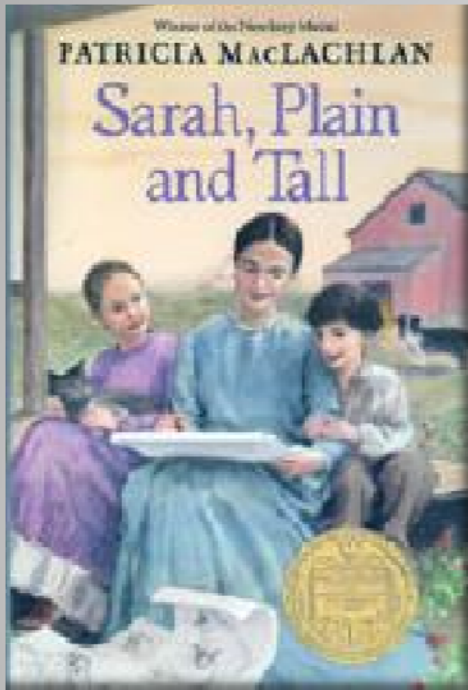


CTE & Vocational courses





Lesson integration



- ❖ In *Sarah Plain and Tall*, Sarah has gone to the prairie and is living in a house with Caleb, Anna, and their father, Jacob. Use the text to look for clues that tell you what this house looks like, and create a model of it in SketchUp.



Math Integration

- ❖ Geometry – draw 3D shapes and calculate area, volume, or circumference.
- ❖ Create a series of geometric solids in SketchUp, and be prepared to explain how your understanding of these shapes enabled you to do this.
 - Example: [3D Pyramid](#)



Lesson integration

- ❖ The turtles that are living in the pond in front of our school need a place to climb up out of the water to get some sun. Use SketchUp to design a sun porch for the pond.





Lesson integration

- ❖ How could the packaging of milk be changed to make it more appealing to children ages 10-15? Use SketchUp to create a model of your new packaging.



Lesson integration Science

- ❖ **Use SketchUp to create an atomic model of the sugar molecule you are investigating.**

SketchUp
Molecules
examples





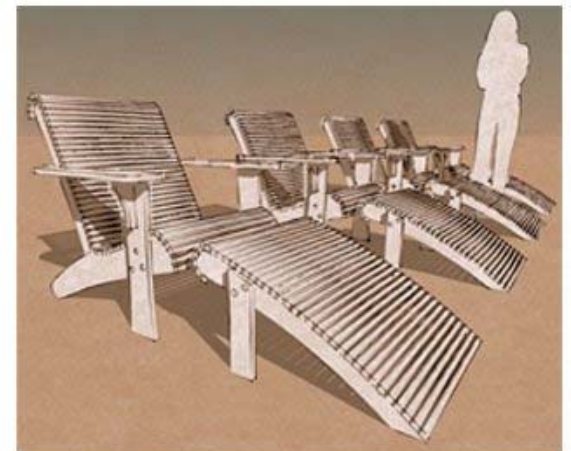
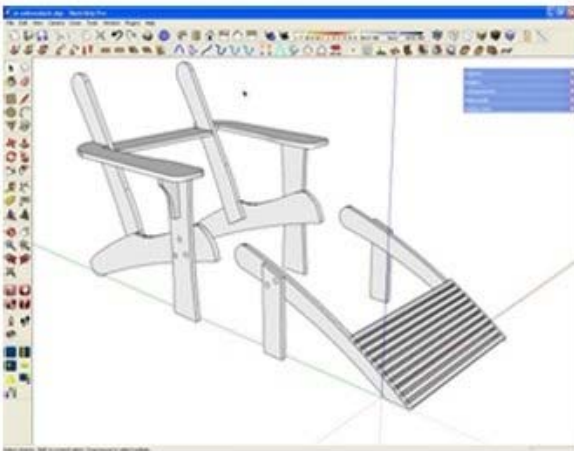
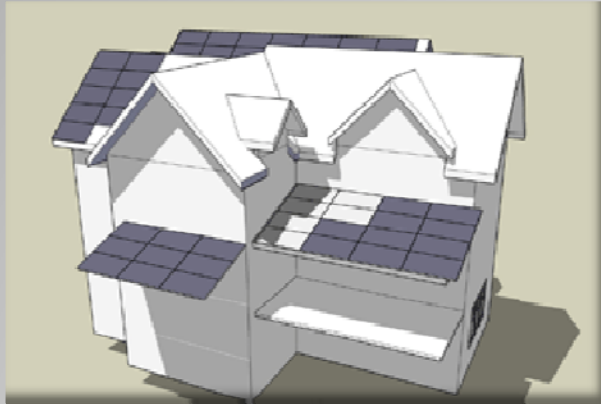
SketchyPhysics

SketchyPhysics is a plug-in for Google SketchUp with easy to use animations and a great physics library.





Lesson Integration Construction Systems





Special Education Integration

Newsweek

- ❖ Newsweek article “[Kids With Autism Love This Software](#)”.
- ❖ It turns out that SketchUp allows people with autism to express their ideas in a visual way—a welcome release for kids who have trouble communicating through speech or writing.



Lesson Integration Social Studies

- ❖ **Designing History – Recreate Normandy Landings.**
- ❖ **Historical places and monuments such as Stonehenge, Arc de Triomphe**

Model your school competition





Find, share & store 3D models online

The Google 3D Warehouse is a collection of 3D models of buildings, bridges, cars, spaceships, futons, dinosaurs and everything else in the universe. It's completely free for everyone to use, and it's getting bigger every day.



News, tips and tricks, user stories and other random bits of 'SketchUppy' information.

<http://sketchupdate.blogspot.com/>



Training

<http://sketchup.google.com/training/>

- Self paced video tutorials
- Training centers
- Video tutorials
- Private training



Resources

www.sketchup.google.com

www.googleearth.com

<http://code.google.com/p/sketchyphysics/>

<http://sketchupdate.blogspot.com/>

<http://sketchup.google.com/training/>

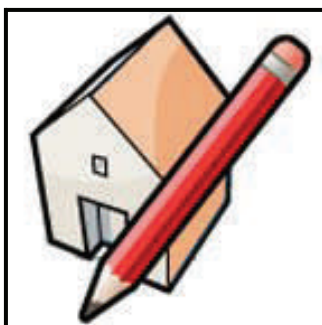
Contact Information

Grace Blasingame

Sam Rayburn High School

gblasingame@pasadenaisd.org

GOOGLE™ SKETCHUP ACROSS THE DISCIPLINES



Google™ SketchUp is a **free** 3D modeling software that is for everyone. Students of all ages and abilities can quickly and easily make 3D diagrams. Students can make their own 3D diagram (models) or browse the hundreds of models in the 3D Warehouse.

Lessons come alive when students make their own model over the concept that was discussed in class. Examples of SketchUp lessons are:

- ♦ Draw a molecule that was studied in class
- ♦ Draw a model of a milk carton to make it appealing to 5-10 year olds.
- ♦ Create a series of geometric solids in SketchUp, and be prepared to explain how your understanding of these shapes enabled you to do this.

How do you get SketchUp?

- ♦ Go to <http://sketchup.google.com/>
- ♦ Click on “download Google SketchUp 7”
- ♦ Compatible with Windows XP, Vista, Mac OS X (10.4+)
- ♦ Follow the instructions on the screen.
- ♦ Contact your district’s network administrators if installation fails.
- ♦ SketchUp Pro for Educators free with documentation of school info; see SketchUp download page for details.

Grace Blasingame
Technology Liaison
Sam Rayburn High School
2121 Cherrybrook Ln.
Pasadena, TX 55502
Phone: 713-740-0330
E-mail: gblasingame@pasadenaisd.org



 Pasadena Independent School District
National Model School District 2008